

## LEGAL INFORMATION

Copyright © 2012 ZTE CORPORATION.  
All rights reserved.

No part of this publication may be excerpted, reproduced, translated or utilized in any form or by any means, electronic or mechanical, including photocopying and microfilm, without the prior written permission of ZTE Corporation.

The manual is published by ZTE Corporation. We reserve the right to make modifications on print errors or update specifications without prior notice.

## ZTE Corporation

NO. 35, Hi-tech Road South, Shenzhen, P.R. China  
Postcode: 518057  
Http://www.zte.com.cn  
E-mail: mobile@zte.com.cn  
Service Hotline: +86-755-2679999  
Manual No.: 07598450454

## Getting started

The router operates on the 4G(TDD2600/FDD2600/FDD800) and 3G(2100/900) network and support data services.

### Appearance



**WPS button:** To activate the PBC (Push Button Config) function.

### LED Indicator



## Welcome

Thank you for choosing ZTE MF28G Router (hereinafter referred to as "unit" or "router"). To get the most from your router and to keep it in the best condition, please read this manual carefully.

The pictures, symbols and contents in this manual are for your reference only. They might not be completely identical with your router. ZTE operates a policy of continuous development. We reserve the right to update the technical specifications in this manual at any time without prior notice.

## General Precautions

### Safety Precautions

- Some electronic devices may be susceptible to electromagnetic interference. Locate the router away from TV set, radio and other electronic equipment to avoid electromagnetic interference.
- The router may interfere with medical devices like hearing aids and pacemakers. Consult a physician or the manufacturer of the medical device before using the router.

- Please keep yourself at least 20 centimeters away from router.
- Do not use your router in dangerous environments such as oil terminals or chemical factories where there are explosive gases or explosive products being processed.
- Please use original accessories or accessories that are authorized by ZTE. Unauthorized accessories may affect the router performance, damage the router or cause danger to you.
- Do not attempt to dismantle the router. There are no user serviceable parts.
- Do not allow the router or accessories to come into contact with liquid or moisture at any time. Do not immerse the router in any liquid.
- Do not place objects on top of the router. This may lead to overheating of the device.
- The device must be placed in ventilation environment for use.
- Do not expose the router to direct sunlight or store it in hot areas. High temperature can shorten the life of electronic devices.
- Do not allow children to play with the router or charger.

- Keep the length of the cable between the router and the phone less than 10 meters.
- The router is for indoor use only. Do not use the router outside. Do not connect telephone extensions which run outside of the building. These can result in lightning damage to your unit.

## Cleaning and Maintaining

- Use an antistatic cloth to clean the router. Do not use chemical or abrasive cleanser as these could damage the plastic case. Turn off your router before you clean it.
- Use the router within the temperature range of -10°C ~ +55°C, and the storage temperature range is -20°C ~ +60°C. The humidity range is 5%~95%.
- Do not use your router during a thunderstorm. Remove the mains power pack from the wall socket.
- Do not take out your USIM card unnecessarily. The USIM card may be easily lost or it can be damaged by static electricity.

## Limited Warranty

- This warranty does not apply to defects or errors in the Product caused by:
  - Reasonable Router Appearance Disfiguration.
  - End User's failure to follow ZTE's installation, operation or maintenance instructions or procedures.
  - End User's mishandling, misuse, negligence, or improper installation, disassembly, storage, servicing or operation of the Product.
  - Modifications or repairs not made by ZTE or a ZTE-certified individual.
  - Power failures, surges, fire, flood, accident, actions of third parties or other events outside ZTE's reasonable control.
  - Usage of products of third Parties, or usage in conjunction with third party products provided that such defects is due to the combined usage.
  - Any other cause beyond the range of normal usage for Products. End User shall have no right to reject, return, or receive a refund for any Product from ZTE under the above-mentioned situations.

## MF28G

## Quick Guide

- This warranty is end user's sole remedy and ZTE's sole liability for defective or nonconforming items, and is in lieu of all other warranties, expressed, implied or statutory, including but not limited to the implied warranties of merchantability and fitness for a particular purpose, unless otherwise required under the mandatory provisions of the law.

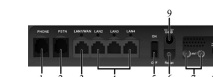
## Limitation of Liability

ZTE shall not be liable for any loss of profits or indirect, special, incidental or consequential damages resulting from or arising out of or in connection with using of this product, whether or not ZTE had been advised, knew or should have known of the possibility of such damages, including, but not limited to lost profits, interruption of business, cost of capital, cost of substitute facilities or product, or any downtime cost.

Indicator	State	Description
1 WAN signal strength indication	ON	Signal strength is very good or good (RSSI >= -90dBm)
	Blinking	Signal strength is weak (-100dBm < RSSI < -90dBm)
	OFF	No signal/RSSI < -100dBm
2 Network mode indication	Green	Registered to 4G network
	Blue	Registered to 3G network
	OFF	Not Registered
3 WAN connection status indication	Blinking	Connected to Internet
	Blinking	Connecting to Internet
	OFF	Not connected to Internet
4 Phone status indication (1) (not supported)	OFF	Local phone hang up or VoIP network unregistered or registration failure
	Blinking	Phone picked up, ringing or VoIP network registering
	On	Local phone calling or VoIP network registered

5 Phone status indication (2) (not supported)	OFF	Local phone hang up or VoIP network unregistered or registration failure
	Blinking	Phone picked up, ringing or VoIP network registering
	On	Local phone calling or VoIP network registered
6 WiFi indication	OFF	WLAN shut-down
	On	WLAN working normally with no data transmission
	Blinking	WLAN working normally with data transmission
7 Power indication	ON	Green--Once device has been initialized and under operational status. Red--Once power button is pushed and device is being initialized
	ON	Once power button is pushed and device is powered off
	OFF	Once power button is pushed and device is powered off

## Interface Description



- Phone:** Standard RJ11 connector for Telephone.
- PSTN:** Standard RJ11 connector for PSTN.
- LAN1/WAN:** Ethernet connections to internet.
- LAN2-LAN4:** Ethernet connections to computer.
- Q/ON/OFF:** Turn the router ON or OFF.
- Reset:** To restore factory default configurations after pressing for 7 seconds.
- ANT:** Connect with the external antenna.
- PRESS ANT ON:** To switch between internal antenna and external antenna modes
- POWER Socket:** To power on the device or shut down the power.

## Connecting with External Power

Connect the external power adaptor to a standard power outlet. Insert the plug into the socket at the rear of the router.

### Switching on Your Device

- Turn the power switch on to get started.

#### Notes:

- Do not put anything on the top of the router. Do not lay routers to overlap each other when using.
- Wait 1-2 minutes after turning the router on before you use the service. The 3G/4G & POWER indication LED should be lit on.

#### Notes:

If the net mode indication LED is blinking constantly, try to move the router to another location. The router takes 1-2 minutes to initialize, attach to the network, and obtain an IP address.

## Power Supply

For normal operation, connect the router to the external power adapter. In case of power failure or when there is no available external power supply, the router will not work.

1

2

3

4

5

6

7

8

9

10

11

12

## Internet Access

The router does not require any drivers, and it supports all operating systems with Ethernet LAN capability, such as Windows 2000, XP, Vista, Windows 7, MAC OS X and Linux. The router supports at least four computers surfing on internet using Ethernet cable at the same time.

Note: All the parameter settings in this chapter are just for your reference. Please contact your service provider for detail.

## Preparation

### Establishing a connection between your device and the client

#### Via Wi-Fi

1. Power on your device directly. It will take 1-2 minutes to initialize, and then Wi-Fi LED is blinking.
2. Use your normal Wi-Fi application on the client to search the available wireless network.

13

#### Notes:

You need to check your Wireless Network Connection. Set the client to obtain an IP address automatically in the Internet protocol (TCP/IP) properties, and the client will get an IP address like "192.168.1.100".

3. Select the SSID (Broadband\_XXXX) of your device, and then click **Connect**. You find the SSID and password on the back side of your router.



14

#### Via RJ45 Ethernet cable

1. Connect your device and the client with the RJ45 Ethernet cable.
  2. Power on your device.
- The connection between your device and the client will be established successfully a moment later.
3. Wait a moment, the connection between your device and the client will be established successfully.

### Accessing the WebGUI Configuration Page

1. Make sure the connection between your device and the client is correct.
2. Launch the internet browser and enter <http://3.home> or <http://192.168.1.1> in the address bar.

#### Notes:

It is recommended that you use IE (7.0 or later), Firefox (3.0 or later), Opera (10.0 or later), Safari (4.0 or later) or Chrome (5.0 or later).

15

3. At <http://3.home> you find information about usage, network name etc.



16

## Login

To make changes to your settings you need to login. You login by pressing the login button in the upper right corner alternatively by pressing any tab. On the page you will get a pop up:



Select the desired language and input the password (the default **Password** is **Password**). Click **Log in** to log in the device.

#### Notes:

If you check **Save** after type in password, the device will save it. Next time when you want to login the device with the same password, what you need to do is click **Log in**.

17

## Accessing the Internet

1. Before accessing the internet, make sure;
2. Establish a connection between your device and the client.

### Accessing the Internet with Mobile Broadband Gateway

Note: Please make sure that you have install USIM card before you switch on the device.

1. Login the WebGUI and set the **Operation Mode as 4G Gateway**
2. Set **Advanced WAN Connection** in WebGUI.

### Accessing the Internet by Fixed Cable Broadband

1. Connect the device with LAN/WAN port.
2. Login the WebGUI and set the **Operation Mode as Cable Broadband mode**.
3. Set **Advanced WAN Connection** in WebGUI.

18

## Settings

After logging in, select **SETTINGS**, and you can do the following operations.

<b>Wireless Network</b>	<ul style="list-style-type: none"> <li>• <b>Network Name (SSID):</b> Service Set Identifier (SSID). Enter a string less than 32 characters as the name for your wireless local area network (WLAN).</li> </ul>
<b>Security Mode</b>	<ul style="list-style-type: none"> <li>• <b>Open:</b> You can authenticate successfully with a SSID without entering a password.</li> <li>• <b>WPA2-PSK:</b> It is the secure version of WPA, with implementation of the 802.11i standard.</li> <li>• <b>WPA-PSK/WPA2-PSK:</b> Apply both the WPA-PSK and WPA2-PSK scheme.</li> </ul>
<b>WPA</b>	<ul style="list-style-type: none"> <li>• <b>WPA Algorithm:</b> AES mode only</li> <li>• <b>Pass phrase:</b> You can input hexadecimal digits up to 64 characters or input ASCII characters choose a length of 63 characters or less.</li> </ul>
<b>Wireless MAC Filtering</b>	<ul style="list-style-type: none"> <li>• <b>Add MAC Filtering Rule:</b> Enable or disable wireless.</li> <li>• <b>MAC address:</b> Set the MAC address that will be MAC Filtered.</li> </ul>
<b>WPS Config</b>	<ul style="list-style-type: none"> <li>• Enable or disable WPS.</li> </ul>

19

## Advanced Settings

Select **ADVANCED**, and you can do more advanced settings.

<b>4G Settings</b>	<ul style="list-style-type: none"> <li>• You can configure how to connect to the Internet, select network band, Access Point Name settings, Enable or disable roaming</li> <li>• This function is only available in 4G Gateway mode.</li> </ul>
<b>Wi-Fi Settings</b>	<ul style="list-style-type: none"> <li>• View the current station list.</li> <li>• Change the basic or advanced wireless network settings.</li> </ul>
<b>Advanced</b>	<ul style="list-style-type: none"> <li>• Choose Operation mode, change the Administrator Settings, restore factory defaults, manage PIN.</li> <li>• LAN Interface setup, upgrade the software, SNTP or Data usage statistics.</li> </ul>
<b>Firewall</b>	<ul style="list-style-type: none"> <li>• Set the Mac/IP/Port F4Gring, URL F4Gring, Port Forwarding.</li> <li>• Set DMZ or the System Security configuration.</li> </ul>

20

#### Notes:

Make sure that you can remember the new password if you change the login password by selecting **Advanced > Management**. Please restore the device to the factory default settings in case you forget the new password.

## Usage of WPS

If your client device supports WPS, you need not to input the password manually after WPS has been available. Please do the following:

1. Start up your device.
2. Launch the client device connected to your device.
3. Enable the WPS function of your device.
4. Enable the WPS function of the client.

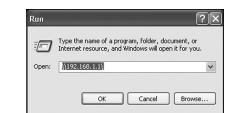
#### Notes:

For the detailed operations about the client, please refer to the client's instruction.

21

## U-Disk Master

1. Start up your device.
2. Launch the client device connected to your device.
3. Connect the storage devices (i.e.USB disk) to the USB port of the device.
4. Select **Start > Run** of the computer.
5. Input <http://3.home> or <http://192.168.1.1> in the open field and press **OK**.

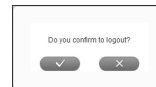


6. Input User Name and Password. The default User Name is admin, Password is admin. Then you can view storage devices.

22

## Logout

Select **Logout**, a pop-up window will appear as the following figure shown:



Click **Yes** to logout the web page.

## Troubleshooting

### Internet Related Problems

Symptoms	Possible Problems/ Solutions
I cannot access the internet at all.	Please check your configuration settings. Please wait 1-2 minutes for the router to initialize. Check your service indicator LED's.
The download or upload speeds are very slow.	The speed is dependent on signal strength. Check your signal strength and network type.

### Others

Symptoms	Possible Problems/ Solutions
The RSSI signal indicator is always blinking or does not light.	This indicates poor reception. Try moving the router to another location near the window.

CE 1588

23